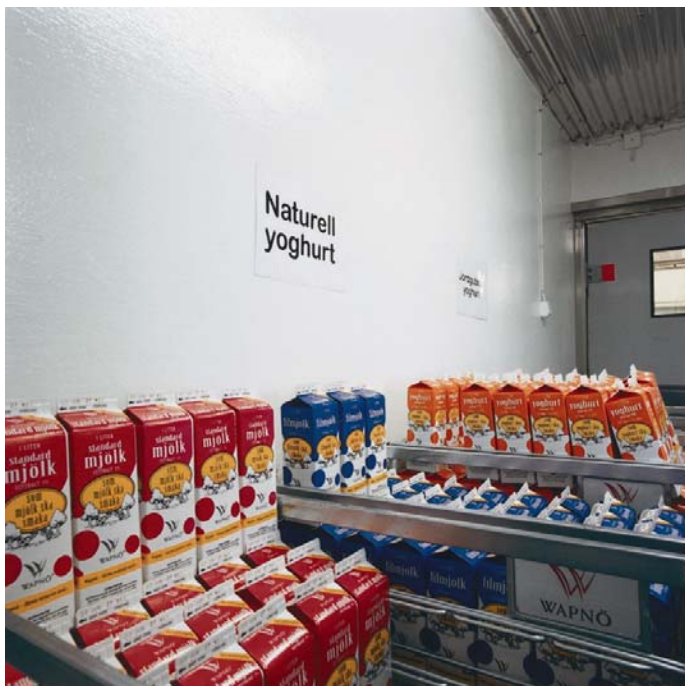


Peran WW



Description

Coloured gloss finish water based hygienic sealer for walls and ceilings.

Uses

Peran WW is suitable for use in food process areas, kitchens, light industrial areas, storerooms and garages.

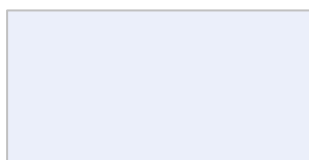
Benefits

- Hygienic
- Vapour permeable
- Can be applied to damp substrates
- Cost effective
- Easy to apply
- Enhances appearance of working environment
- Solvent free
- Low odour.

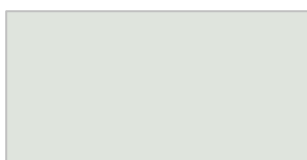
Project References

GlaxoSmithKline, Gate Gourmet, ASDA, Convatec, Beaconsfield Footwear, Widnes Films.

Standard colour chart



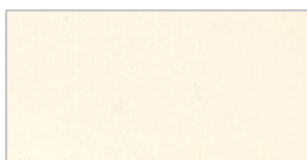
Ice Blue 413



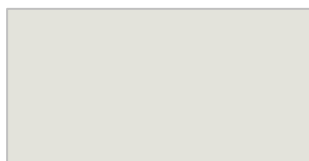
Polar Green 713



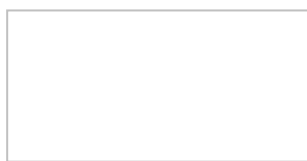
Vanilla Yellow 323



Magnolia 302



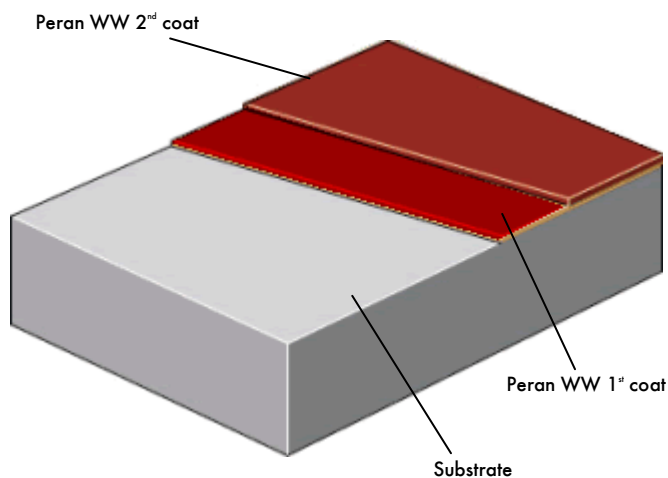
Silver Grey 204



White 050

The applied colours may differ slightly from the examples shown above. Contact our customer services for a true colour sample or a special colour match. Special corporate colours and designs can be produced to special order.

System Design



Model Specification

Product: Peran WW
Finish: Gloss
Thickness: 0.15 mm dry film thickness
Colour: _____
Preparatory work and application in accordance with suppliers instructions.
Supplier: Flowcrete UK Ltd
Telephone: Customer Service - +44 (0)1270 753000

Substrate Requirements

Solid stable surfaces that enable sound adhesion are essential. Suitable surfaces include concrete, plaster, particle and fibre board. Preparation is the same as for standard industrial painting. The substrate should be surface dry to 95% RH as per BS8204 and free from rising damp and ground water pressure.

Products Included in this System

Peran WW (density = 1.28 kg/l)

Primer: Peran WW 0.25 kg/m²

Coating: 1st coat: Peran WW 0.25 kg/m²
2nd coat: Peran WW 0.25 kg/m²

10% water by weight of the Peran WW unit (A+B) **must** be added to the mixed product.
Once diluted, do **not** add further quantities of water.

For non-porous, light coloured substrates the primer coat may be omitted; although some colours may require more coats to achieve opacity (to be qualified on site by the approved applicator).

Detailed application instructions are available upon request.

Installation Service

The installation should be carried out by an approved contractor with a documented quality assurance scheme. Obtain details of our approved contractors by contacting our customer service team or enquiring via our web site www.flowcrete.co.uk.

Note

No resin system is totally colour fast and may change colour over time (exhibits a yellowing effect). Colour change depends on the UV light and heat levels present and hence the rate of change cannot be predicted. This is more noticeable in very light colours but does not compromise the product's physical or chemical resistance characteristics. We have endeavoured to adopt colours within our standard range which minimise this change.

Intensively coloured products (e.g. hair colorants, medical disinfectants etc.) and plasticizer migration (e.g. from rubber tyres) can lead to irreversible discoloration in the surface. Please contact our Technical Services Department for further advice.

Focus on the Floorzone

Flowcrete are market leaders in specialist industrial and commercial flooring. Systems available include: underfloor heating systems, floor screeds, surface damp proof membranes, decorative floor finishes, seamless terrazzo, car park deck waterproofing, corrosion resistant systems... to name just a few.

Our objective is to satisfy your Floorzone needs.

Technical Information

The figures that follow are typical properties achieved in laboratory tests at 20 °C and at 50% Relative Humidity.

Fire Resistance	EN 13501-1 - B _{FL} -s1
Fire safety to the UK Building Regulations 2000	Complies with the requirements for Class 0.
Temperature Resistance	Tolerant up to 70 °C
Vapour Permeability (ASTM:E96:90)	20g / m ² / mm / 24 hr
Surface Hardness	182 secs. Koenig Hardness Test
Chemical Resistance	Good resistance to tea, coffee, cola, fruit juice, soaps and bleach
Abrasion Resistance EN ISO 5470-1 (Taber Abrader)	104 mg loss per 1000 cycles (1kg load using H22 wheels)
Adhesion by pull-off test	> 3 N/mm ² EN 1542

Complies with BS 8204-6/FeRFA type 1.

Speed of Cure

	10 °C	20 °C	30 °C
Overcoating time	16 hrs	8 hrs	6 hrs
Full chemical cure	14 days	7 days	7 days

Environmental considerations

The finished system is assessed as non-hazardous to health and the environment. The long service life and seamless surface reduce the need for repairs, maintenance and cleaning. Environmental and health considerations are controlled during manufacture and application of the products by Flowcrete staff and fully trained and experienced contractors.

Important Notes

Flowcrete's products are guaranteed against defective materials and manufacture and are sold subject to its standard Terms and Conditions of Sale, copies of which can be obtained on request.

Any suggested practices or installation specifications for the composite floor or wall system (as opposed to individual product performance specifications) included in this communication (or any other) from Flowcrete UK Ltd constitute potential options only and do not constitute nor replace professional advice in such regard. Flowcrete UK Ltd recommends any customer seek independent advice from a qualified consultant prior to reaching any decision on design, installation or otherwise.